



LEADERS IN TRANSPORTABLE HOMES, GRANNY FLATS AND PARK CABINS







# Bond Homes



Who are Bond Homes	04
What Bond Homes do	05
Why Build a Transportable Home	06
What are Granny Flats	07
Are Bond Homes Built to be Energy Efficient	08
Can a Bond Home be Built in a Bushfire Prone Area	09
What Happens Next	10
Our Display Homes	11
1 Bedroom	12 - 13
2 Bedroom	14 - 19
3 Bedroom	20 - 25
4 Bedroom	26 - 29
5 Bedroom	29
Park Cabins	30 - 31
Bungalows	32 - 33
Specifications & Options	34
Where to find Bond Homes	35





# WHO ARE BOND HOMES



**Bond Homes is a family business with over 35 years experience in the building industry. We combine the benefits of kit homes and onsite built homes, offering innovative, flexible design options and personal service.**

**You can be confident that your home is designed and built to the highest standard with quality craftsmanship and a level of care that only you deserve.**

**Make your dreams a reality - create a lifetime of memories in your new home - your new Bond Home.**



# WHAT DO BOND HOMES DO



Building today's home style using tomorrow's technology provides a welcome change to the slow and wasteful methods of conventional building. Each of our homes are constructed in our purpose built factory at Ballarat and we transport the finished home to any suitable site throughout Victoria.

This ensures no delays during construction and a much shorter building time, thus giving you peace of mind and your new Bond Home sooner.





# WHY BUILD A TRANSPORTABLE HOME



Transportable homes have many advantages over building onsite, they are more cost effective, especially when building in a remote area and they are built stronger than a traditional home. They are quicker to construct, energy efficient and also environmentally friendly. Building a transportable home indoors under factory conditions ensures safe and comfortable working conditions all year round, no matter what the weather. This means no time delays in construction and for the customer, a more accurate estimate of the completion date.



# WHAT ARE GRANNY FLATS

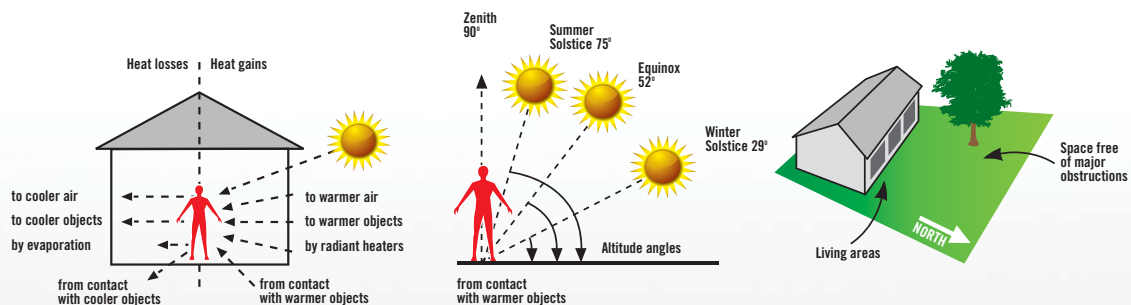
**The term 'Granny Flat' is the common name given to a small secondary dwelling on a housing block. The permitted use for a Granny Flat varies from Council to Council but generally falls into the category of a 'Dependent Persons Unit'. Many councils allow a second dwelling on a block on the condition that it must be a 'Relocatable' dwelling used to accommodate a person who is dependent.**



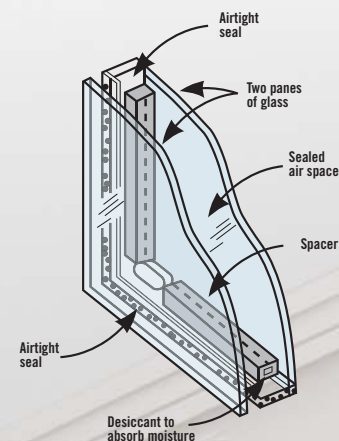
# ARE BOND HOMES BUILT TO BE ENERGY EFFICIENT



All the homes we construct are built to comply with or exceed the 6 Star Energy Rating requirements. Double glazing and bulk insulation are standard features across our entire range. You can rest easy knowing that you are purchasing an energy efficient home that saves you money.



All windows in Bond Homes are double glazed. The cavity between the glass panels of our double glazed units is filled with argon gas. This makes the glazing unit 30% more thermally efficient than standard double glazing.





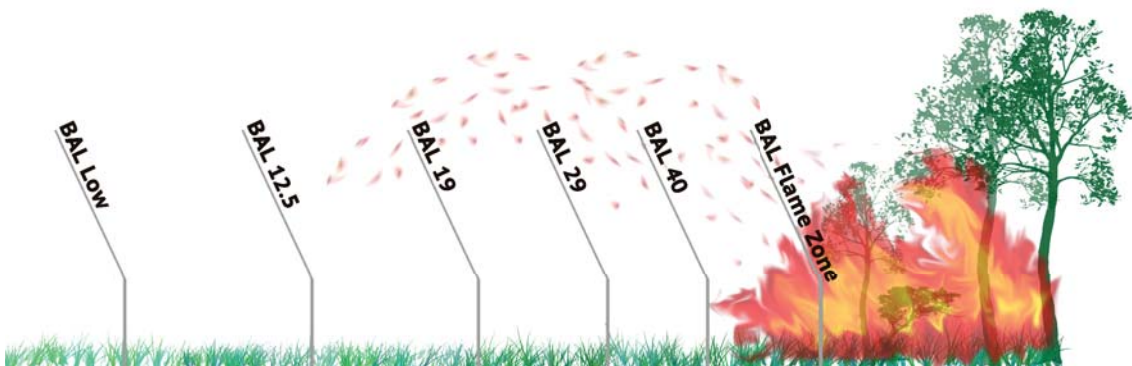
# CAN A BOND HOME BE BUILT IN A BUSHFIRE PRONE AREA



## What is a Bushfire Prone Area?

A Bushfire prone area is an area of land that can support a bushfire or is likely to be subject to bushfire attack.

Bushfire Prone areas are identified on a bushfire prone land map which has been prepared for different areas throughout Victoria. Bond Homes can assist in identifying if your land is subject to this exposure.



Building in a Bushfire Prone area introduces a number of additional design, specification and construction requirements. The table below indicates the bushfire attack levels of exposure.

Bushfire Attack Level (BAL)	Description of predicted bushfire attack and levels of exposure
BAL-LOW	There is insufficient risk to warrant specific construction requirements.
BAL-12.5	Ember attack.
BAL-19	Increasing levels of ember attack and burning debris ignited by windborne embers together with increasing heat flux between 12.5 and 19 kW m <sup>2</sup> .
BAL-29	Increasing levels of ember attack and burning debris ignited by windborne embers together with increasing heat flux between 19 and 29 kW m <sup>2</sup> .
BAL-40	Increasing levels of ember attack and burning debris ignited by windborne embers together with increasing heat flux with the increased likelihood of exposure to flames.
BAL-FZ	Direct exposure to flames from fire front in addition to heat flux and ember attack.

**Once you have chosen to build a Bond Home, our trained staff will assist you in choosing the best design to suit your budget and lifestyle requirements. We have a huge design range with many options to choose from, giving you control over the finished design and layout of your new Bond Home. Your Bond Home, your choice!**

## 1. Initial Enquiry

- Full colour brochure & pricing information supplied
- Your requirements discussed

## 2. Site Assessment

- Your site assessed under no obligation

## 3. Drawings & Quotations

- Your home drawn to your specifications
- Written quote supplied

## 4. Contract

- Contract signed
- Colour schemes chosen
- Deposit paid

## 5. Paperwork & Permits

- Soil test undertaken
- Energy rating assessed
- Planning permits obtained
- Septic permit obtained
- Building permit obtained

## 6. Commencement

- Building permit received
- Floor structure begins
- Progress payments paid at different stages (base, frame, lockup, fitout)

## 7. On-site Preparation

- Site prepared
- Footings & Stumps installed

## 8. Delivery

- Factory construction completed
- Your home delivered

## 9. Completion

- Onsite works completed
- Finished product assessed
- Final payment due
- Ownership handed over to you

## 10. Ninety Day Service

- Service carried out on your new home



# OUR DISPLAY HOMES

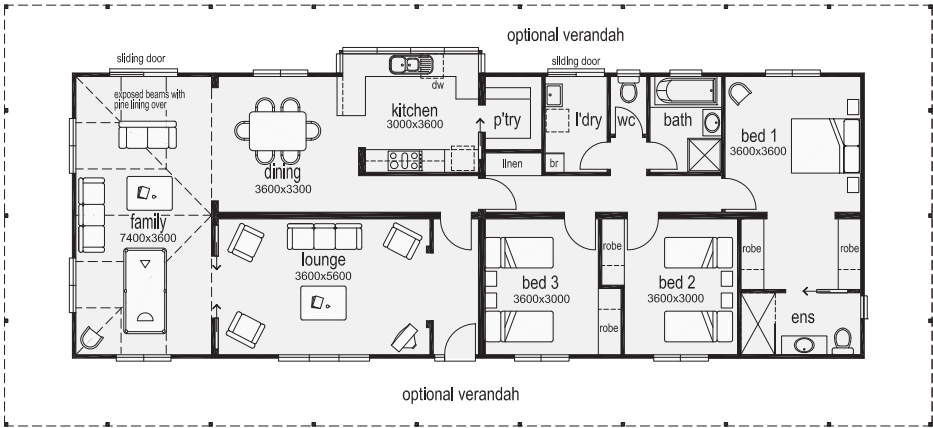


## MALDON

Dimensions:  
21.0m x 7.56m

House area:  
161.0m2

Optional verandah area:  
112.8m2



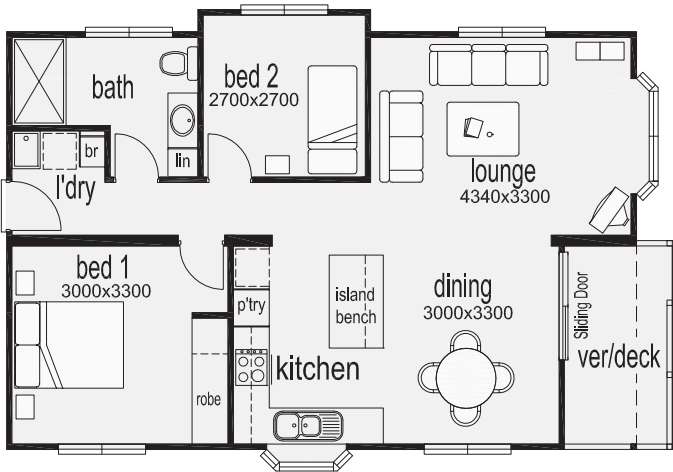
## PARKDALE

Dimensions:  
10.50m x 6.96m

House area:  
70.0m2

Deck area:  
6.1m2

Verandah area:  
4.0m2



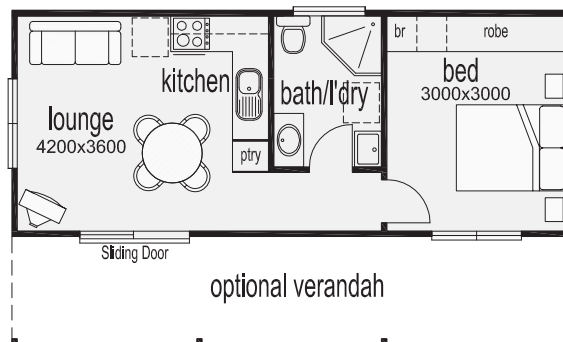
# 1 BEDROOM

## DERBY

Dimensions:  
9.36m x 3.78m

House area:  
35.4m<sup>2</sup>

Optional verandah area:  
16.8m<sup>2</sup>

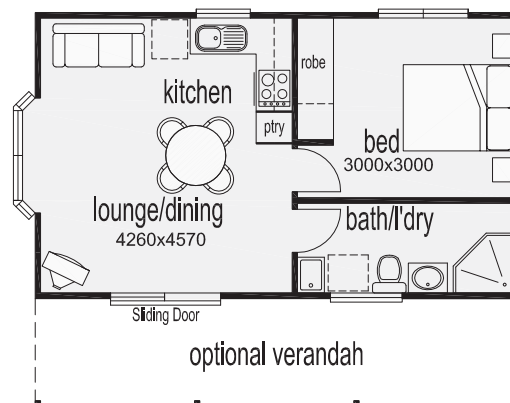


## HENLEY

Dimensions:  
8.07m x 4.77m

House area:  
38.5m<sup>2</sup>

Optional verandah area:  
14.5m<sup>2</sup>





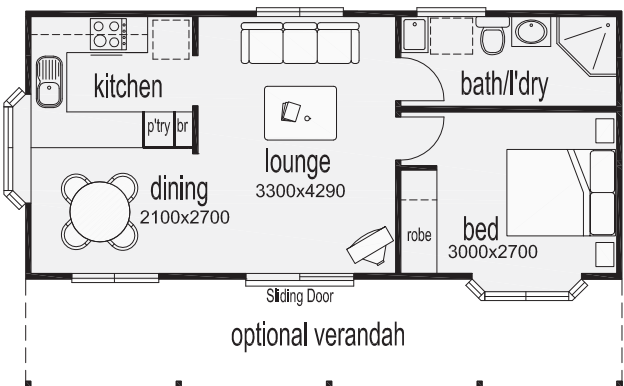
# 1 BEDROOM

## BURLEIGH

Dimensions:  
9.96m x 4.47m

House area:  
44.5m<sup>2</sup>

Optional verandah area:  
17.9m<sup>2</sup>

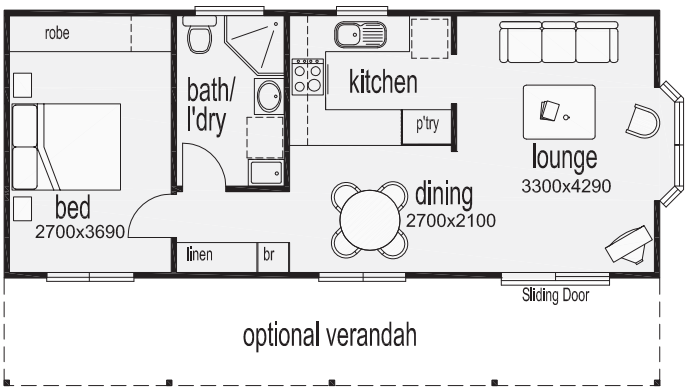


## BENTLEY

Dimensions:  
10.95m x 4.47m

House area:  
48.9m<sup>2</sup>

Optional verandah area:  
19.7m<sup>2</sup>



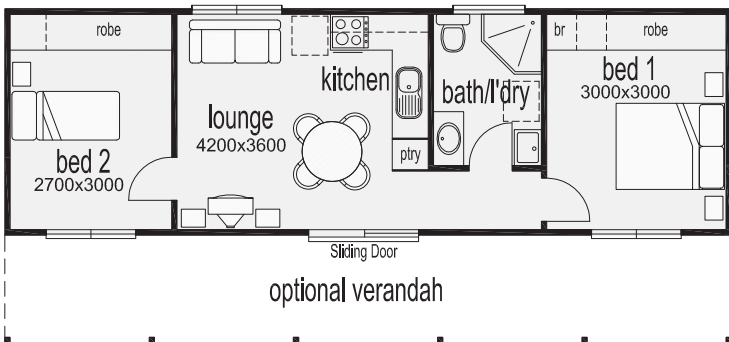
# 2 BEDROOMS

## TALBOT

Dimensions:  
12.15m x 3.78m

House area:  
45.9m<sup>2</sup>

Optional verandah area:  
21.9m<sup>2</sup>

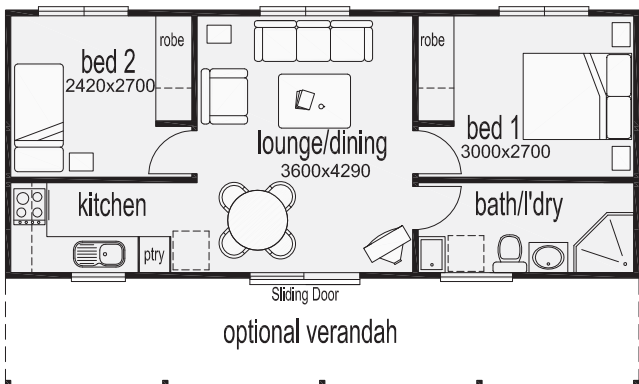


## MUNRO

Dimensions:  
10.58 x 4.47m

House area:  
47.2m<sup>2</sup>

Optional verandah area:  
19.0m<sup>2</sup>





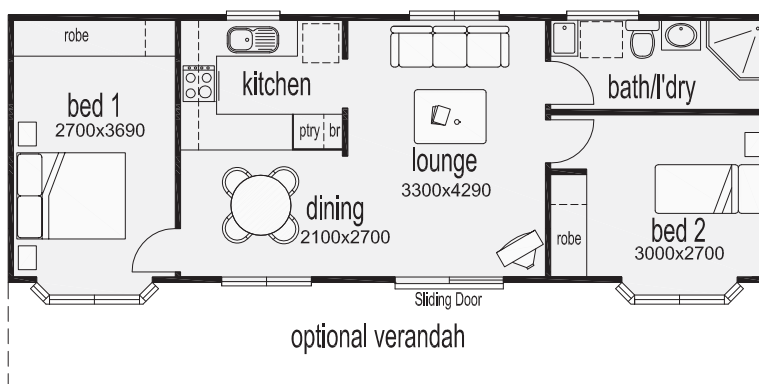
## 2 BEDROOMS

### MANSFIELD

Dimensions:  
12.75m x 4.47m

House area:  
57.0m<sup>2</sup>

Optional verandah area:  
22.9m<sup>2</sup>

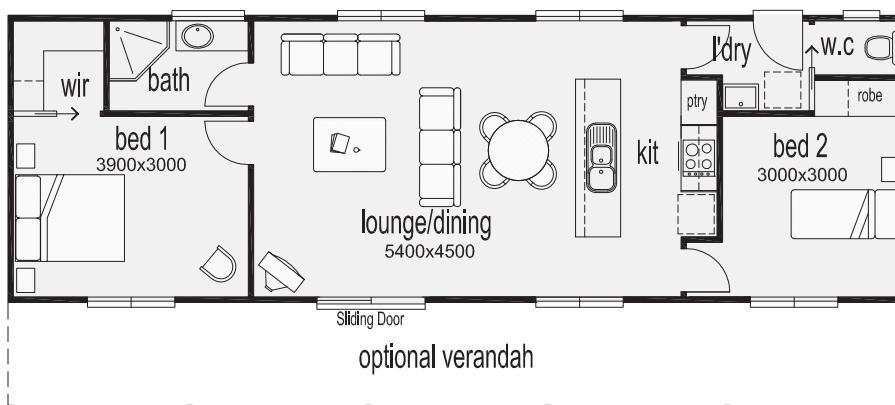


### KINGSTON

Dimensions:  
14.96m x 4.77m

House area:  
71.3m<sup>2</sup>

Optional verandah area:  
26.9m<sup>2</sup>



## 2 BEDROOMS

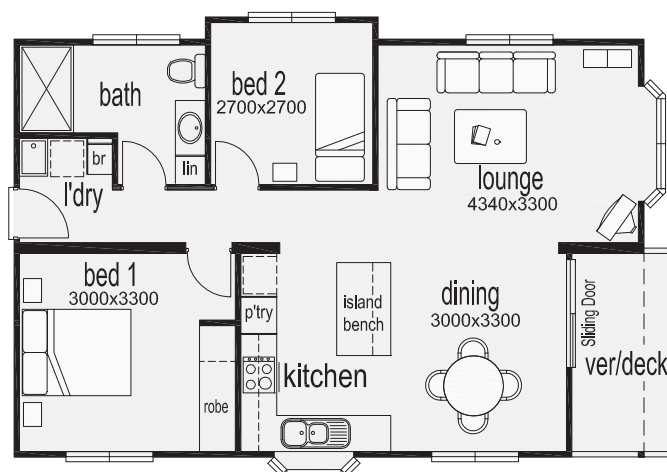
### PARKDALE

Dimensions:  
10.50m x 6.96m

House area:  
70.0m<sup>2</sup>

Deck area:  
6.1m<sup>2</sup>

Verandah area:  
4.0m<sup>2</sup>



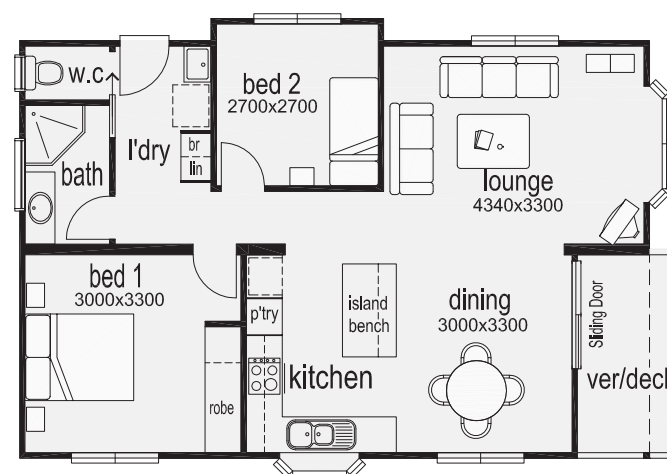
### PARKDALE II

Dimensions:  
10.50m x 6.96m

House area:  
74.0m<sup>2</sup>

Deck area:  
6.1m<sup>2</sup>

Verandah area:  
4.0m<sup>2</sup>





## 2 BEDROOMS

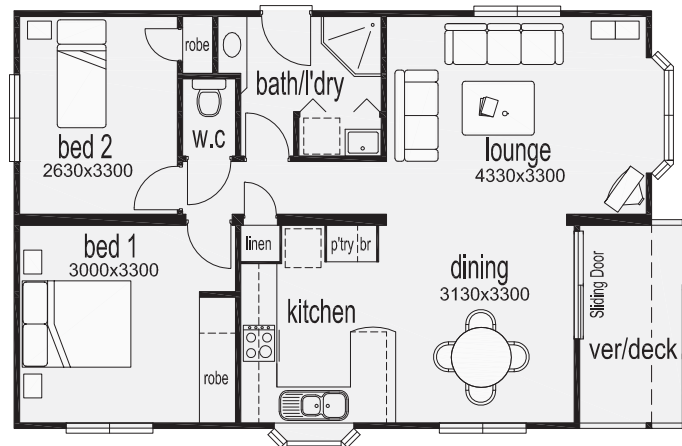
### PARKDALE III

Dimensions:  
10.63 x 6.96m

House area:  
70.0m<sup>2</sup>

Deck area:  
6.1m<sup>2</sup>

Verandah area:  
4.0m<sup>2</sup>

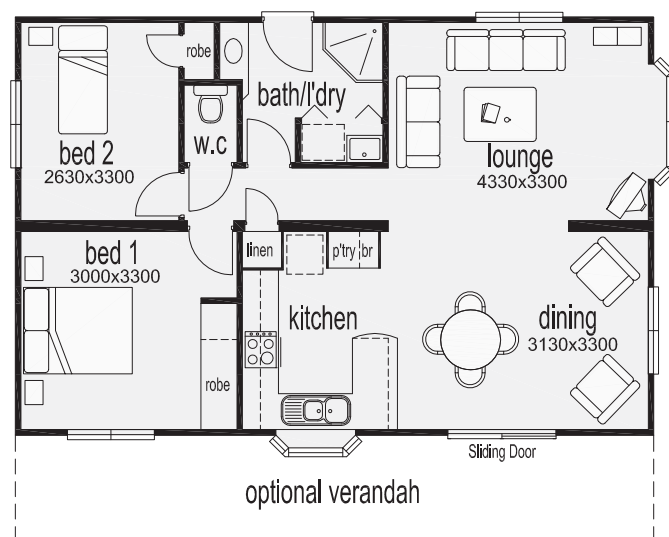


### PARKDALE IV

Dimensions:  
10.63 x 6.96m

House area:  
74.0m<sup>2</sup>

Optional verandah area:  
19.1m<sup>2</sup>



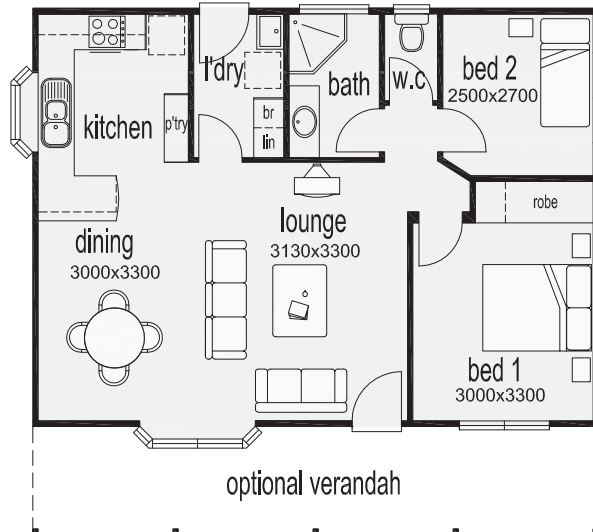
## 2 BEDROOMS

### FINLEY

Dimensions:  
9.42m x 6.96m

House area:  
65.5m<sup>2</sup>

Optional verandah area:  
16.6m<sup>2</sup>



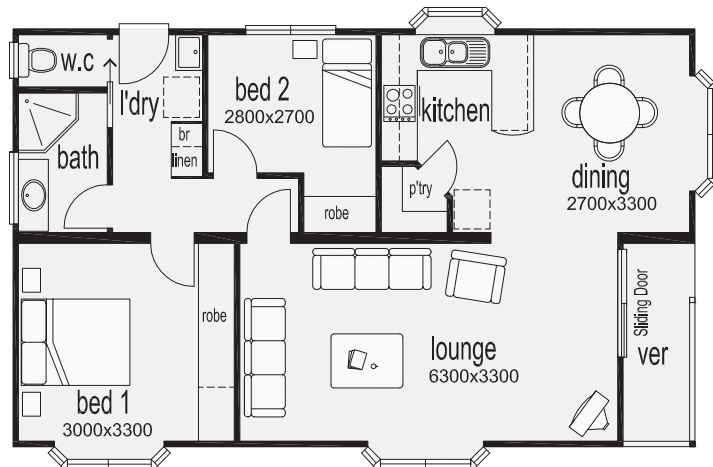
### CHATSWORTH

Dimensions:  
11.37m x 6.96m

House area:  
75.1m<sup>2</sup>

Deck area:  
4.0m<sup>2</sup>

Verandah area:  
4.0m<sup>2</sup>





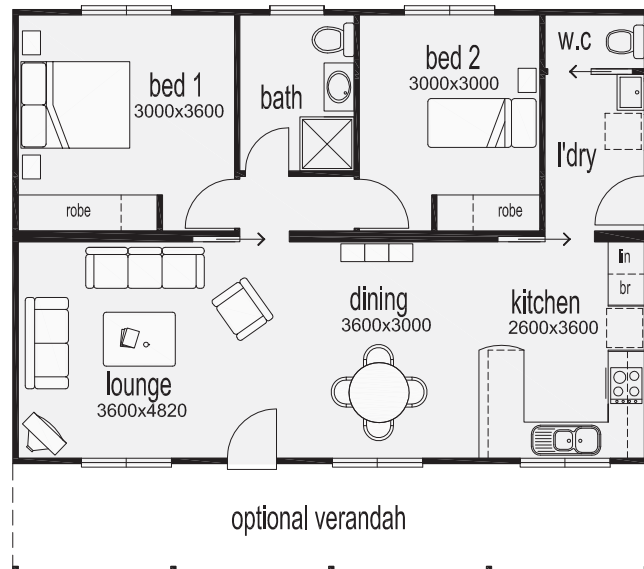
## 2 BEDROOMS

### ORBOST

Dimensions:  
10.60m x 7.56m

House area:  
80.1m<sup>2</sup>

Verandah area:  
19.0m<sup>2</sup>

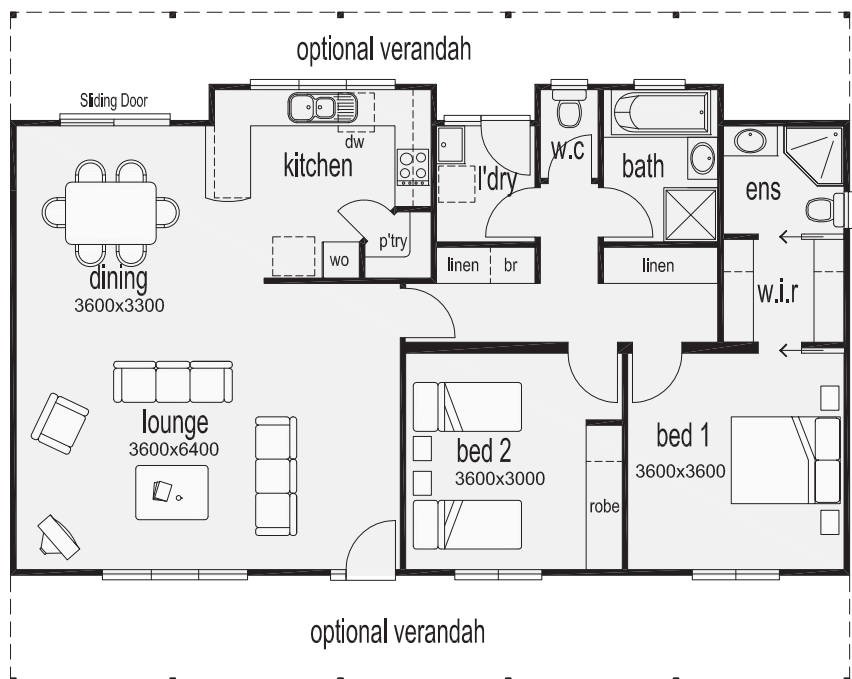


### BEECHWORTH

Dimensions:  
13.90m x 7.56m

House area:  
109.6m<sup>2</sup>

Optional verandah area:  
46.8m<sup>2</sup>



# 3 BEDROOMS



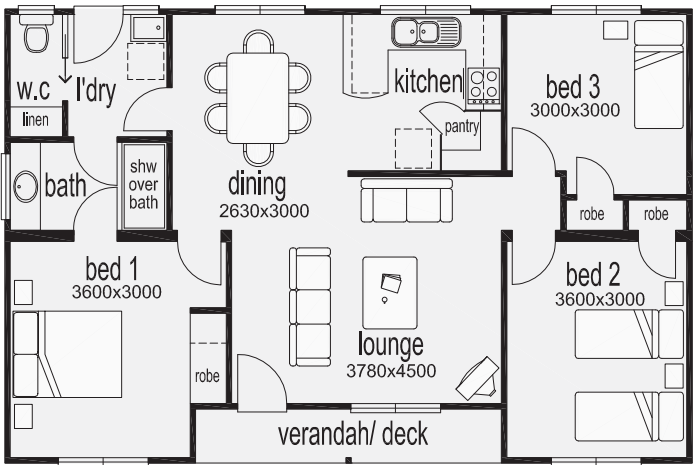
## DELMONT

Dimensions:  
11.46m x 7.56m

House area:  
82.0m<sup>2</sup>

Deck area:  
4.6m<sup>2</sup>

Verandah area:  
4.6m<sup>2</sup>



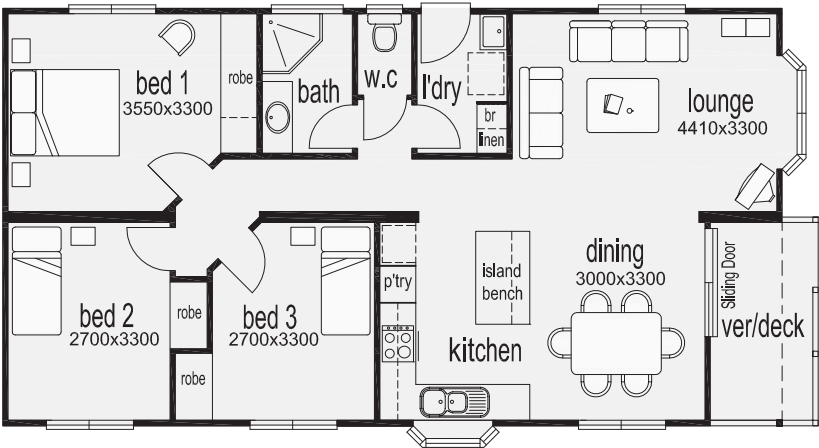
## AMBERLEY

Dimensions:  
13.00m x 6.96m

House area:  
86.4m<sup>2</sup>

Deck area:  
6.1m

Verandah area:  
4.0m<sup>2</sup>



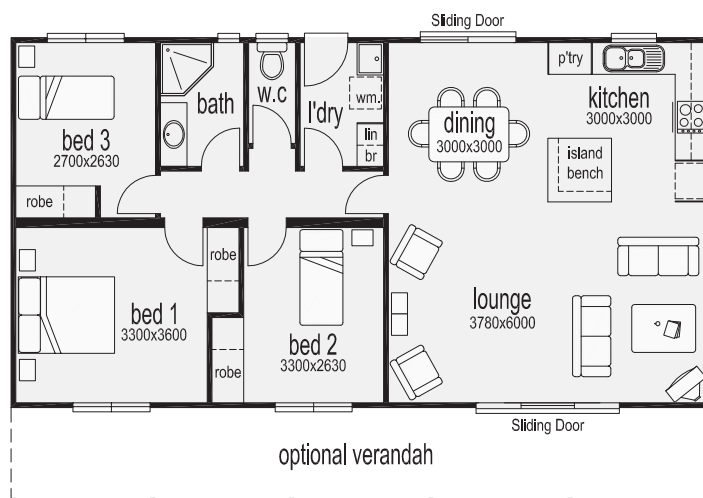
# 3 BEDROOMS

## ROMSEY

Dimensions:  
13.19m x 6.96m

House area:  
91.80m2

Verandah area:  
23.74m2

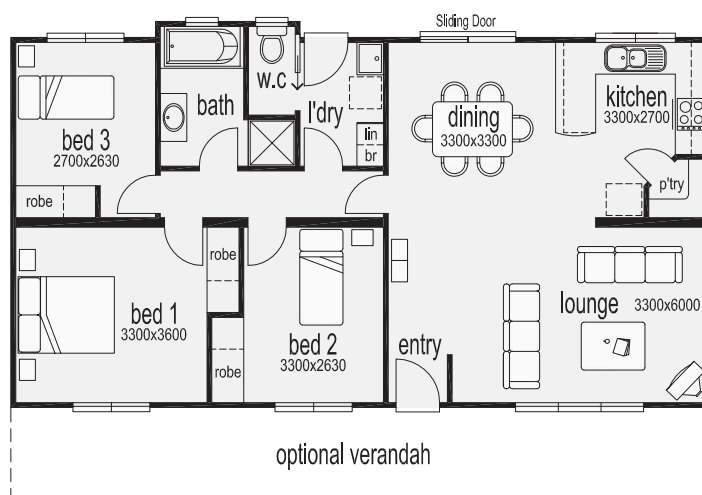


## NEWSTEAD

Dimensions:  
13.19m x 6.96m

House area:  
92.62m2

Optional verandah area:  
23.74m2





# 3 BEDROOMS

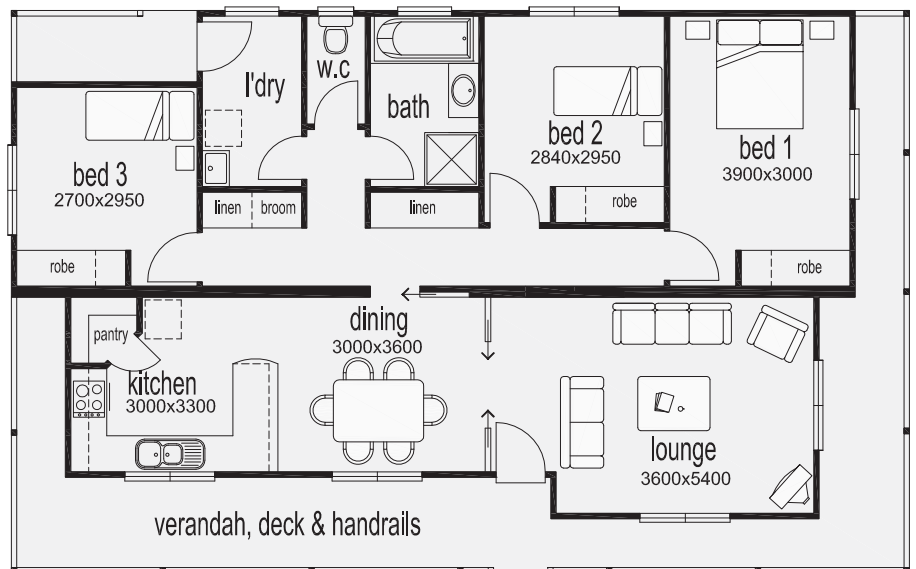
## MALMSBURY

Dimensions:  
14.97m x 9.36m

House area:  
103.0m<sup>2</sup>

Deck area:  
36.3m<sup>2</sup>

Verandah area:  
36.3m<sup>2</sup>

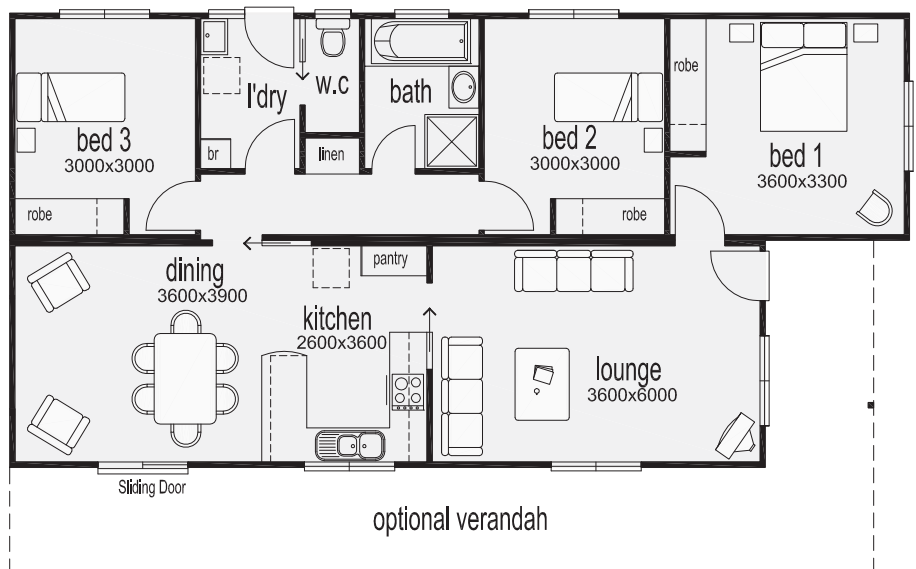


## LISMORE

Dimensions:  
14.98m x 7.56m

House area:  
105.0m<sup>2</sup>

Optional verandah area:  
32.6m<sup>2</sup>



# 3 BEDROOMS

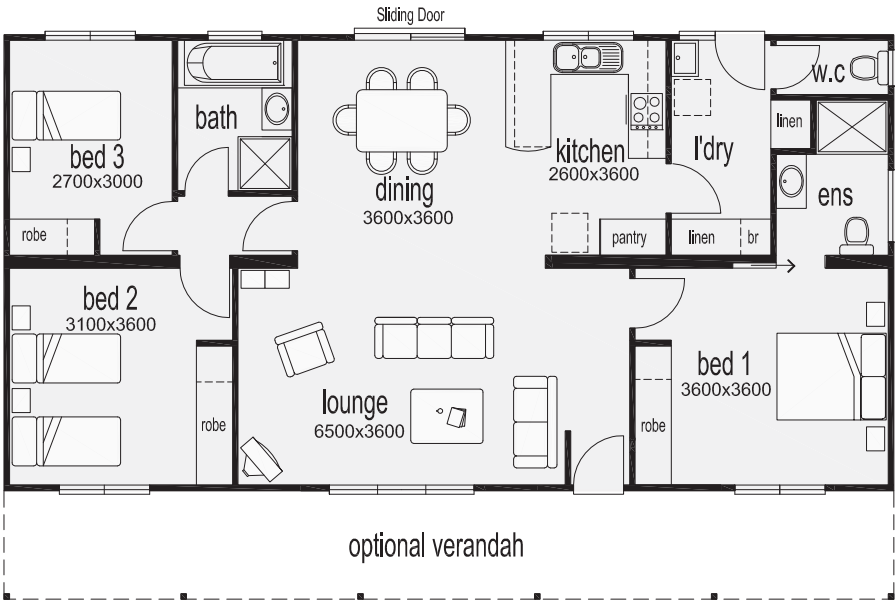


## HAMILTON

Dimensions:  
14.76m x 7.56m

House area:  
111.6m<sup>2</sup>

Optional verandah area:  
26.5m<sup>2</sup>

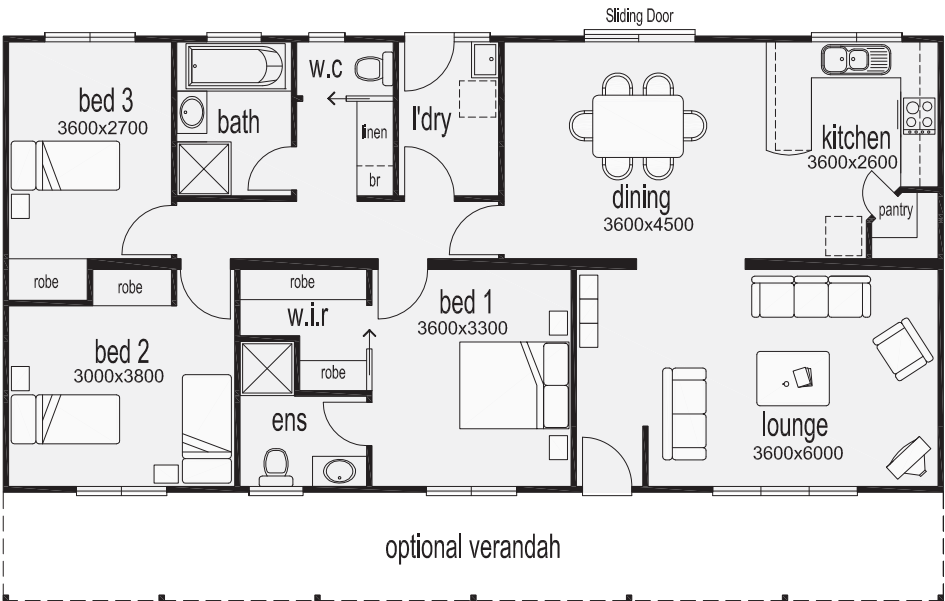


## GLENLYON

Dimensions:  
15.60m x 7.56m

House area:  
117.9m<sup>2</sup>

Optional verandah area:  
28.0m<sup>2</sup>



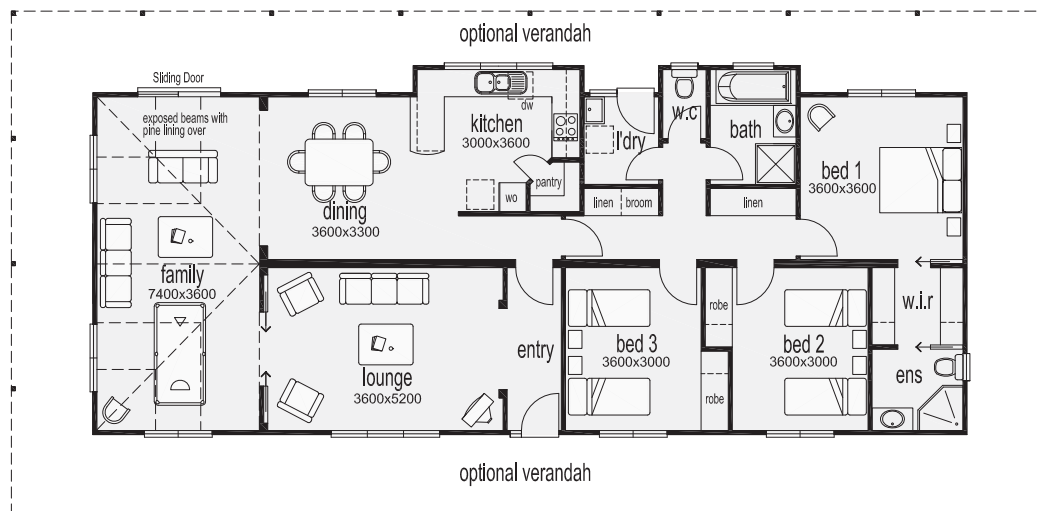
# 3 BEDROOMS

## CHILTERN

Dimensions:  
19.33m x 7.56m

House area:  
150.3m2

Optional verandah area:  
105.6m2

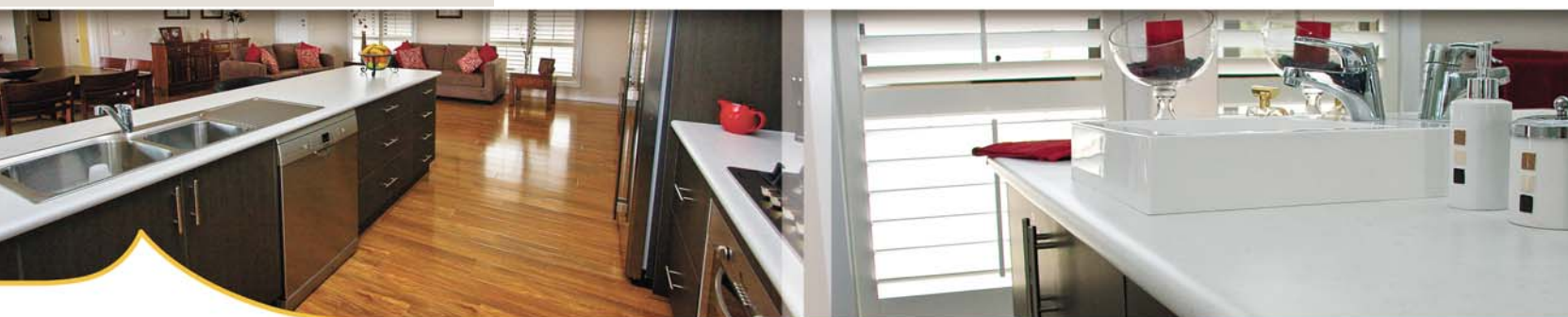
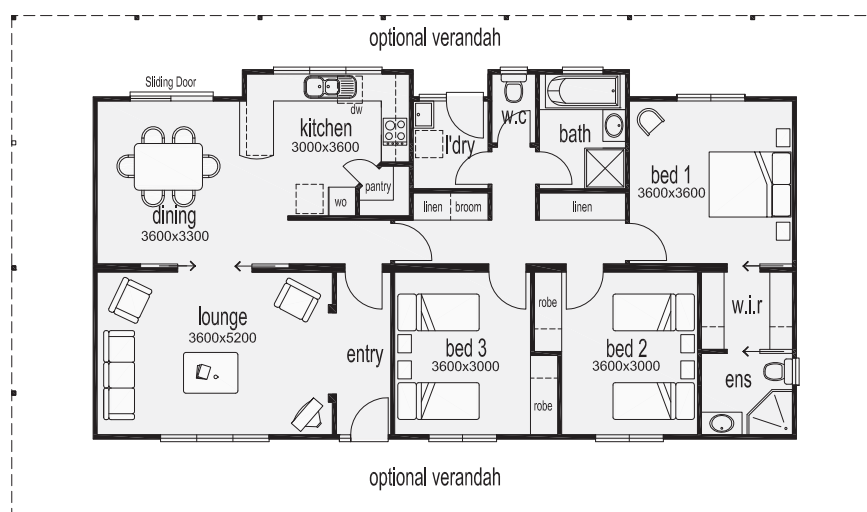


## CHILTERN II

Dimensions:  
15.55m x 7.56m

House area:  
121.7m2

Optional verandah area:  
92.0m2





# 3 BEDROOMS

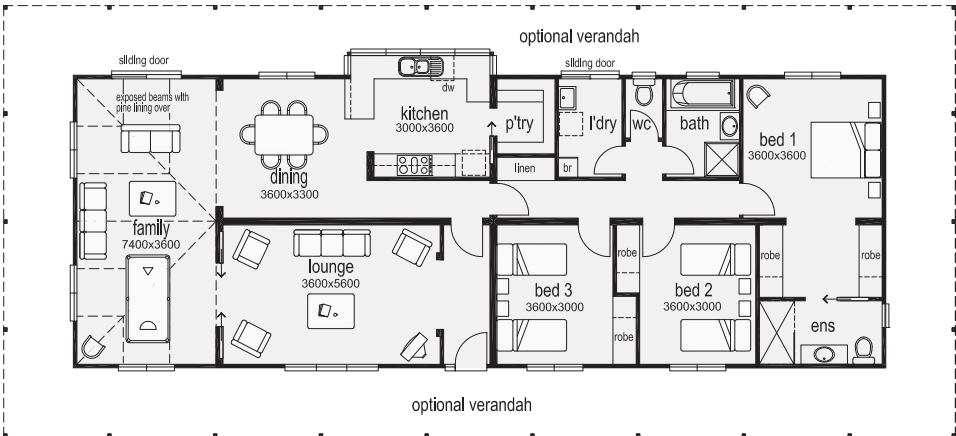


## MALDON

Dimensions:  
21.00m x 7.56m

House area:  
161.0m2

Optional verandah area:  
112.8m2

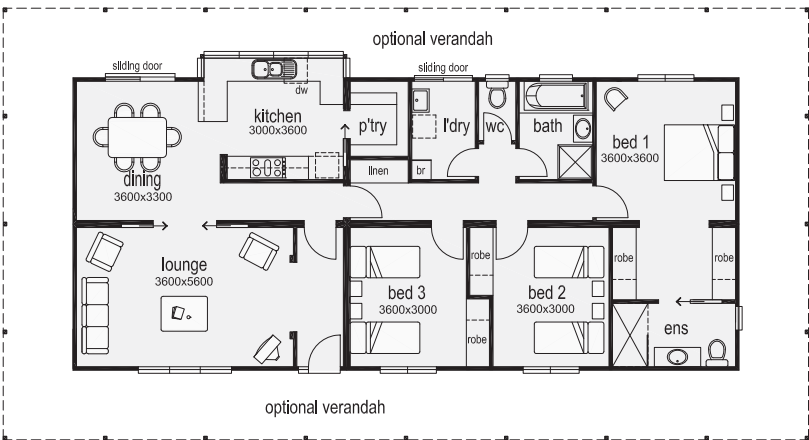


## MALDON II

Dimensions:  
17.20m x 7.56m

House area:  
132.4m2

Optional verandah area:  
99.8m2



# 4 BEDROOMS

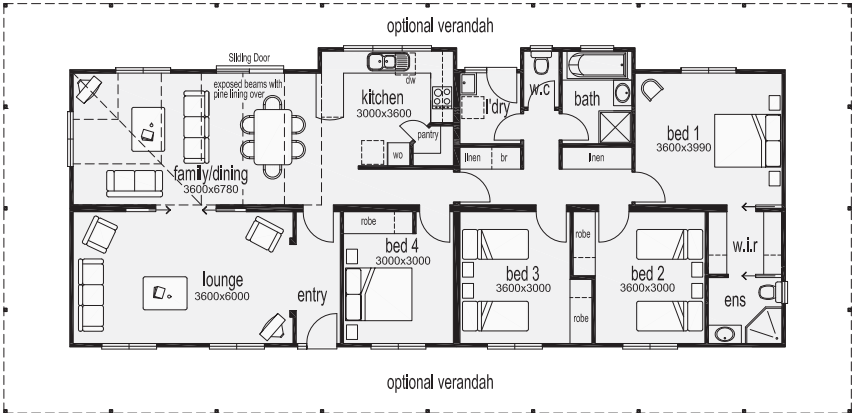


## CHILTERN III

Dimensions:  
19.53m x 7.56m

House area:  
151.8m<sup>2</sup>

Optional verandah area:  
106.30m<sup>2</sup>

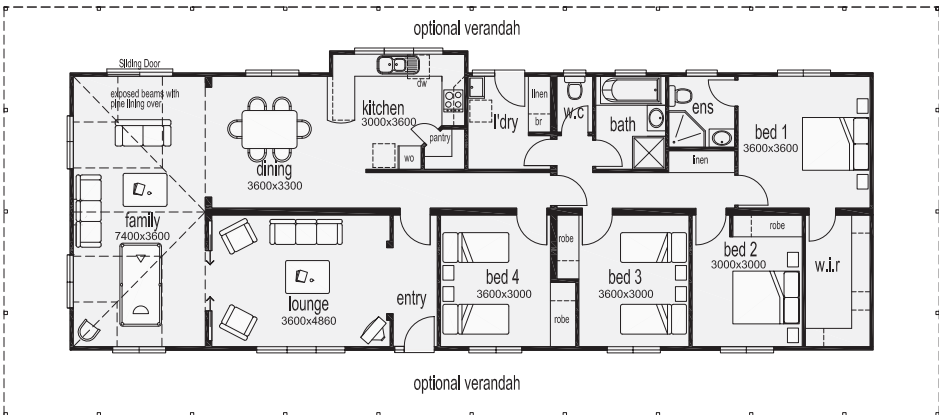


## CHILTERN IV

Dimensions:  
21.92m x 7.56m

House area:  
168.0m<sup>2</sup>

Optional verandah area:  
116.80m<sup>2</sup>



# 4 BEDROOMS

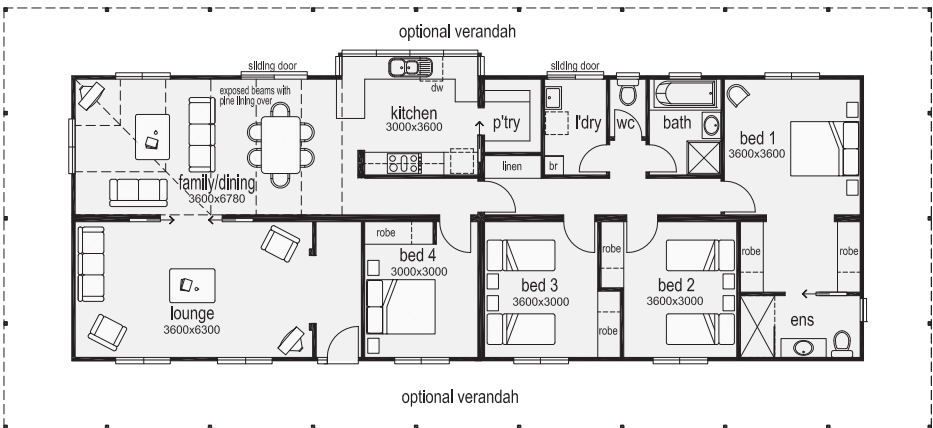


## MALDON III

Dimensions:  
21.00m x 7.56m

House area:  
161.0m2

Optional verandah area:  
113.5m2

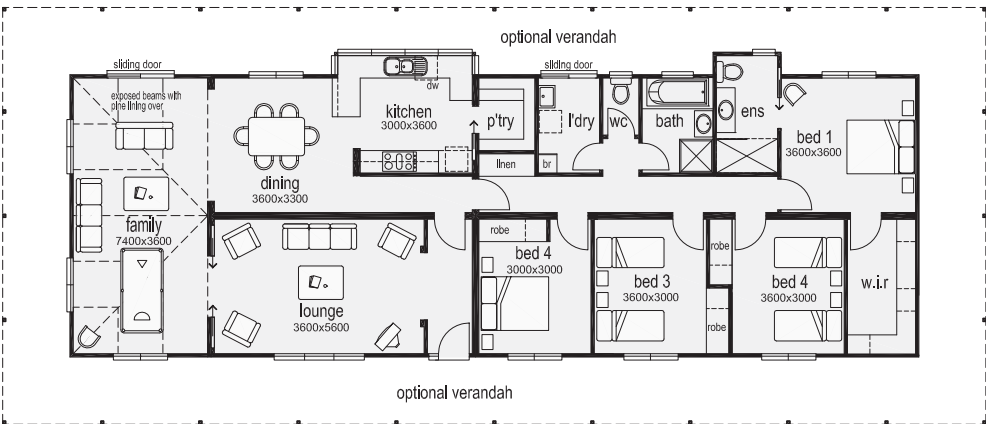


## MALDON IV

Dimensions:  
22.70m x 7.56m

House area:  
175.2m2

Optional verandah area:  
120.6m2





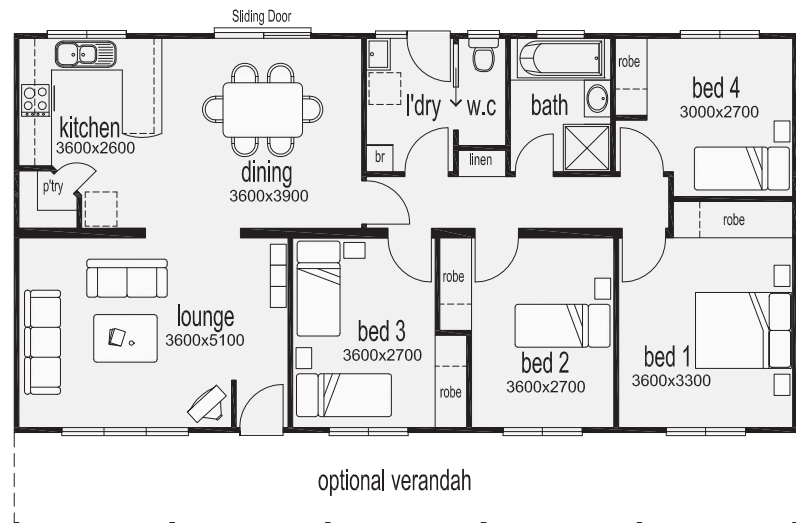
# 4 BEDROOMS

## HORFIELD

Dimensions:  
14.85m x 7.56m

House area:  
112.2m<sup>2</sup>

Optional verandah area:  
26.73m<sup>2</sup>

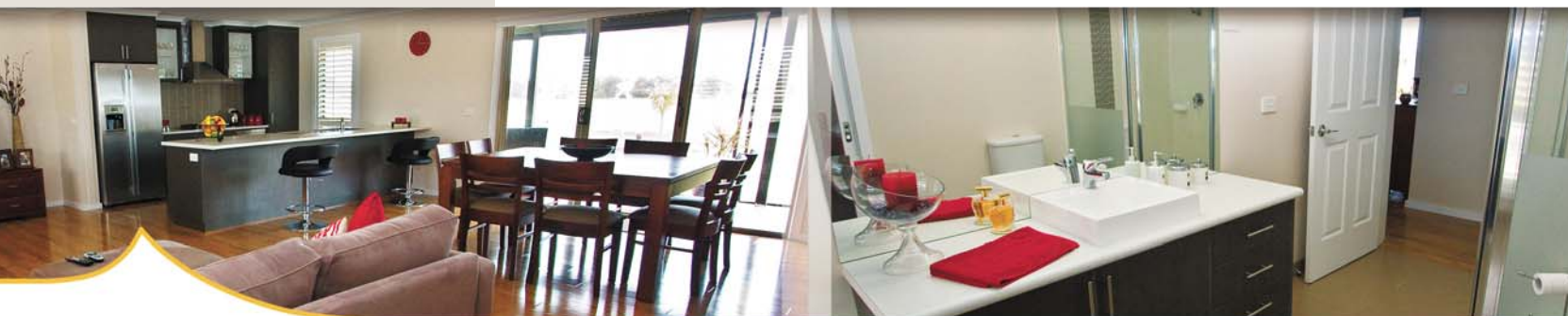
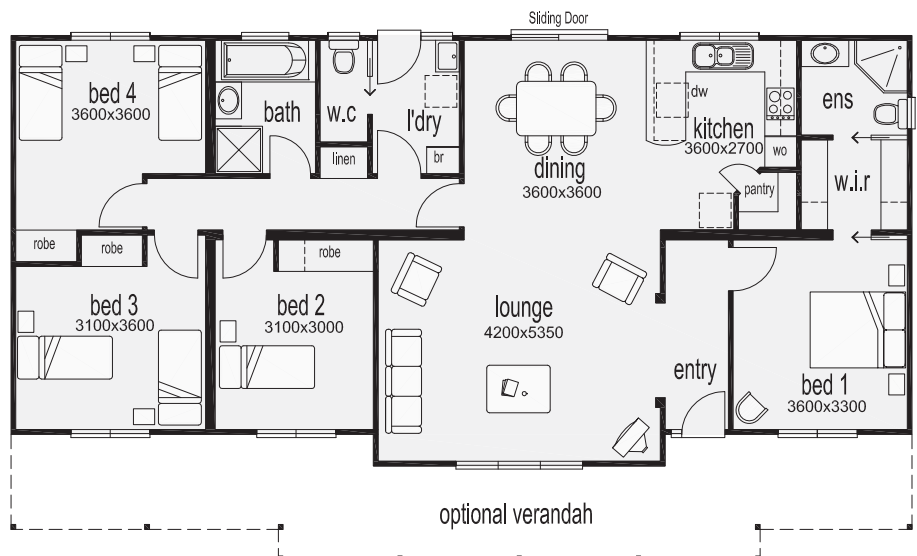


## GROVEDALE

Dimensions:  
17.08m x 7.56m

House area:  
132.5m<sup>2</sup>

Optional verandah area:  
32.9m<sup>2</sup>



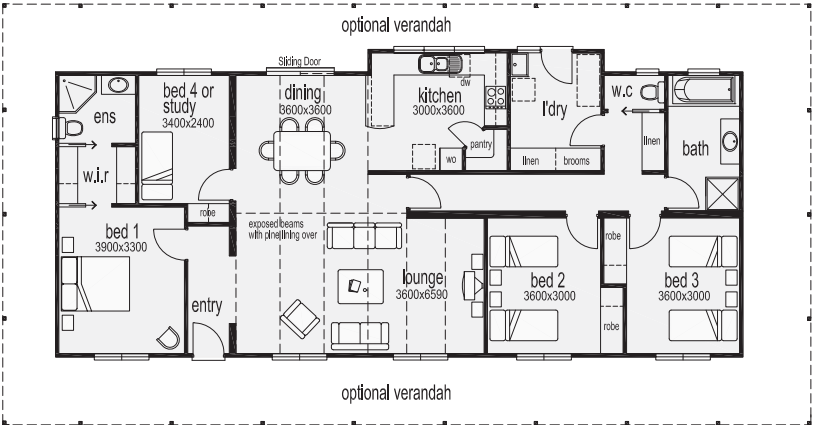
# 4 & 5 BEDROOMS

## MACEDON

Dimensions:  
18.25m x 7.56m

House area:  
141.7m<sup>2</sup>

Optional verandah area:  
102.1m<sup>2</sup>

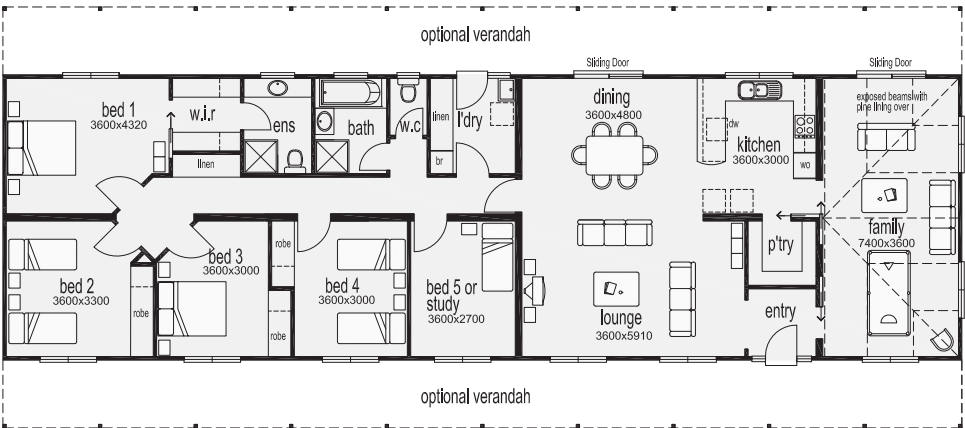


## CANTERBURY

Dimensions:  
25.44m x 7.56m

House area:  
192.3m<sup>2</sup>

Optional verandah area:  
91.6m<sup>2</sup>

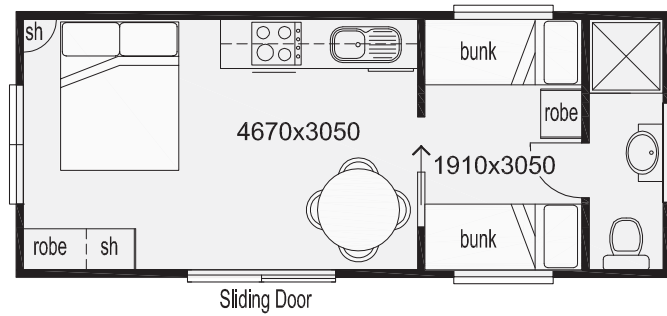


# PARK CABINS

2610

Dimensions:  
7.97m x 3.23m

Living area:  
25.7m<sup>2</sup>

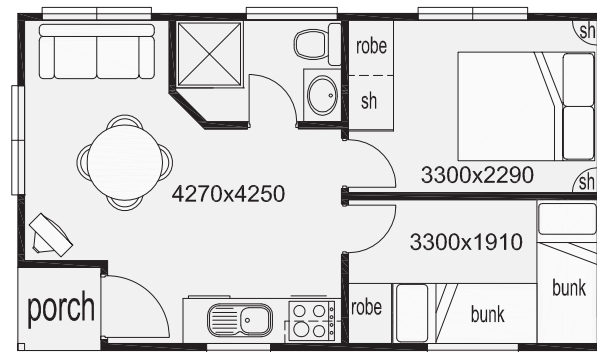


2514

Dimensions:  
7.77m x 4.47m

Living area:  
33.3m<sup>2</sup>

Porch area:  
1.4m<sup>2</sup>





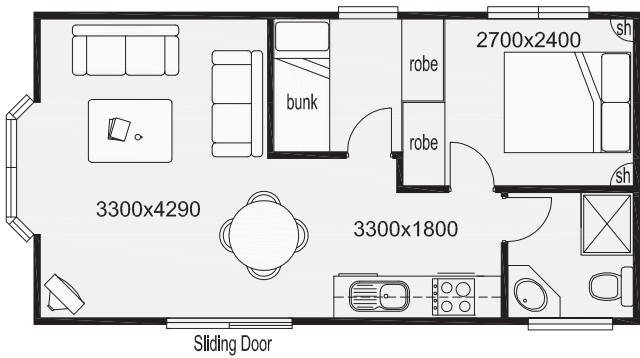
# PARK CABINS



2814

Dimensions:  
8.68m x 4.47m

Living area:  
38.7m<sup>2</sup>

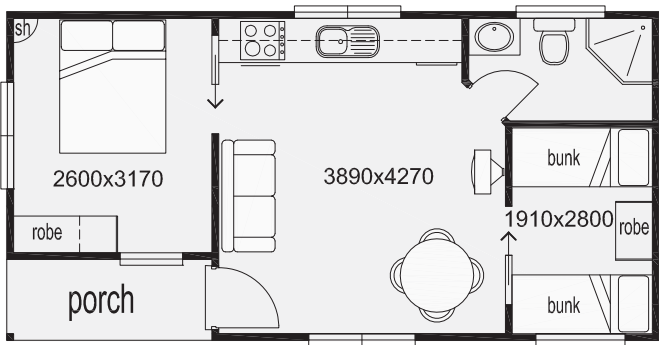


2914

Dimensions:  
8.87m x 4.47m

Living area:  
39.6m<sup>2</sup>

Porch area:  
3.3m<sup>2</sup>



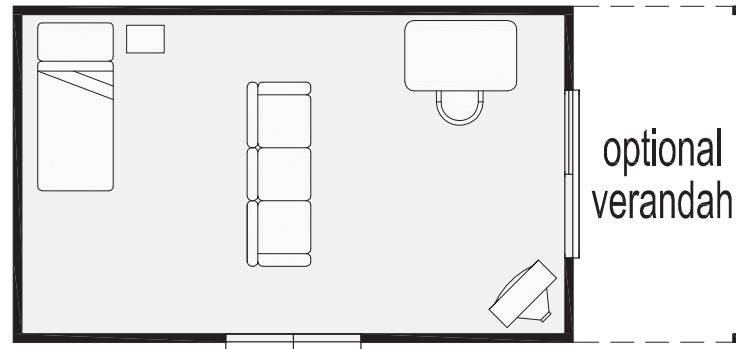
# BUNGALOWS

2012

Dimensions:  
6.0m x 3.6m

Living area:  
21.6m<sup>2</sup>

Optional verandah area:  
6.5m<sup>2</sup>

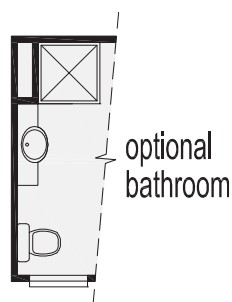
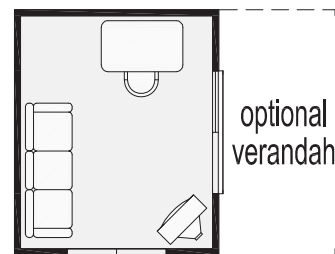


1012

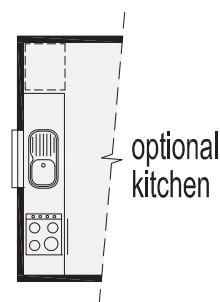
Dimensions:  
3.0m x 3.6m

Living area:  
10.8m<sup>2</sup>

Optional verandah area:  
6.5m<sup>2</sup>



optional  
bathroom



optional  
kitchen



# BUNGALOWS

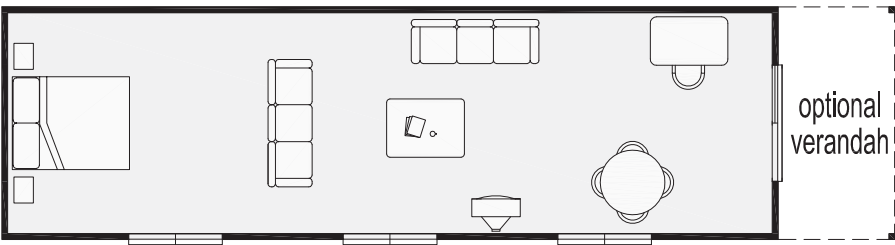


4012

Dimensions:  
12.0m x 3.6m

Living area:  
43.2m<sup>2</sup>

Optional verandah area:  
6.5m<sup>2</sup>

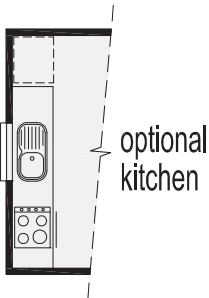
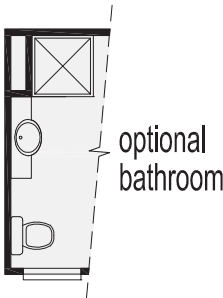
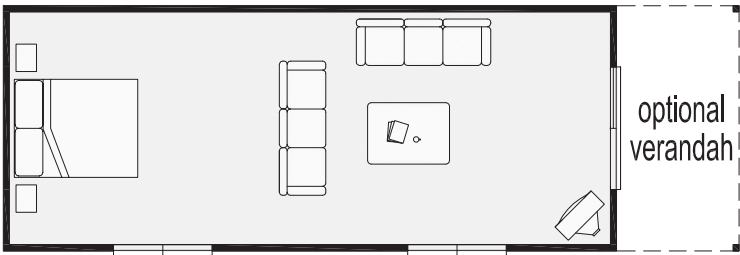


3012

Dimensions:  
9.0m x 3.6m

Living area:  
32.4m<sup>2</sup>

Optional verandah area:  
6.5m<sup>2</sup>





## Standard Specifications

01. Delivery to 150km of Ballarat
02. Installation on a Flat Site with Suitable Access
03. Inclusive 6 Star Energy Rating Compliance
04. 6½ year Master Builders Warranty
05. Engineered Steel Sub Floor
06. Galvanised Floor Joists & Stumps
07. Seasoned Pine Wall Frames and Roof Trusses
08. Hardiplank Woodgrain Exterior Wall Cladding
09. Vinyl Weatherboard Exterior Wall Cladding
10. Colorbond Roof Cladding, Guttering and Trims
11. Aluminium Awning Double Glazed Windows
12. Flyscreens and Locks to Windows
13. 2.42 metre (8') Ceiling Height
14. Steps to 570mm High
15. Baseboards to Perimeter
16. Meter Box with Circuit Breakers installed
17. Soil Test
18. Building Permit and Fees
19. Waste Plumbing to Floor Level
20. All Internal Plumbing
21. Foundations to Intermediate Soil Conditions
22. Hot and Cold Water Connections to Taps
23. Thermal Insulation to Ceiling R.4.0
24. Thermal Insulation to External Walls R2.0
25. Thermal Insulation to Underside of Floor R2.5
26. Painted Plasterboard Wall and Ceiling Linings
27. 55mm Cove Cornice throughout
28. Colonial Kiln Dried Hardwood Architraves and Skirting
29. 4 Panel Internal Painted Doors throughout
30. Built in Robes with Sliding Doors
31. White Melamine Shelving to Robes & Linen Cupboards
32. Carpet on Rubber Underlay
33. Vinyl Floor Coverings to Kitchen & Wet Areas
34. Towel Rail and Toilet Roll Holder

35. Light Fittings throughout
36. Quality Kitchen Built-ins
37. Laminate Round Edge Bench Tops
38. Hot Water Service Electric Twin Element
39. Upright Cooker with Separate Oven and Grill
40. Ducted Rangehood over Cooking Area
41. Wall Oven Fan Forced & Hot Plates

## Available Options

01. Skillion Verandahs 1.8 metres wide
02. Decking 1.8 metres wide
03. Handrails/Balustrade to Decking
04. Termite Treated Wall/Roof Framing
05. Dutch Gable, Butterfly, Hip or Skillion roof styles
06. 2.57metre (8'6") or 2.72metre ( 9') ceiling height
07. Cedar Weatherboard Exterior Wall Cladding
08. Corrugated External Wall cladding
09. Timber Awning Windows
10. Exposed Beam Ceiling with Pine Lining
11. Dado Wall Lining to 900mm high
12. Decorative Cornice
13. Window Furnishings
14. Solid Timber Kitchen
15. Wood, Gas or Electric Heating
16. Air Conditioning
17. Disabled Bathroom Fittings
18. Stepless Shower & Grab Rails
19. Ramps
20. Gas Appliances
21. Solar Hot Water Service
22. Solar Power
23. Water Tanks
24. Connections to Services



# WHERE TO FIND BOND HOMES

